

COMMITTENTE:



# COMUNE DI MOLITERNO

Provincia di POTENZA

REGIONE BASILICATA

"REALIZZARE I MIGLIORI SISTEMI DI RACCOLTA DIFFERENZIATA  
ED UN'ADEGUATA RETE DI CENTRI DI RACCOLTA "  
FONDI FEARS 2014-2020 ASSE 5 - AZIONE 6A.6.1.2  
REGIONE BASILICATA DIP.TO AMBIENTE ED ENERGIA

## REALIZZAZIONE DEL CENTRO DI RACCOLTA COMUNALE MOLITERNO VIA ISTRIA - CENTRO URBANO

### PROGETTO ESECUTIVO

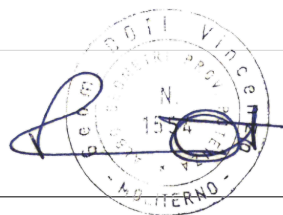
#### 02.00.00\_INQUADRAMENTO GEOGRAFICO

SCALA :

1:varie

PROGETTISTA: Geom. Vincenzo DOTI

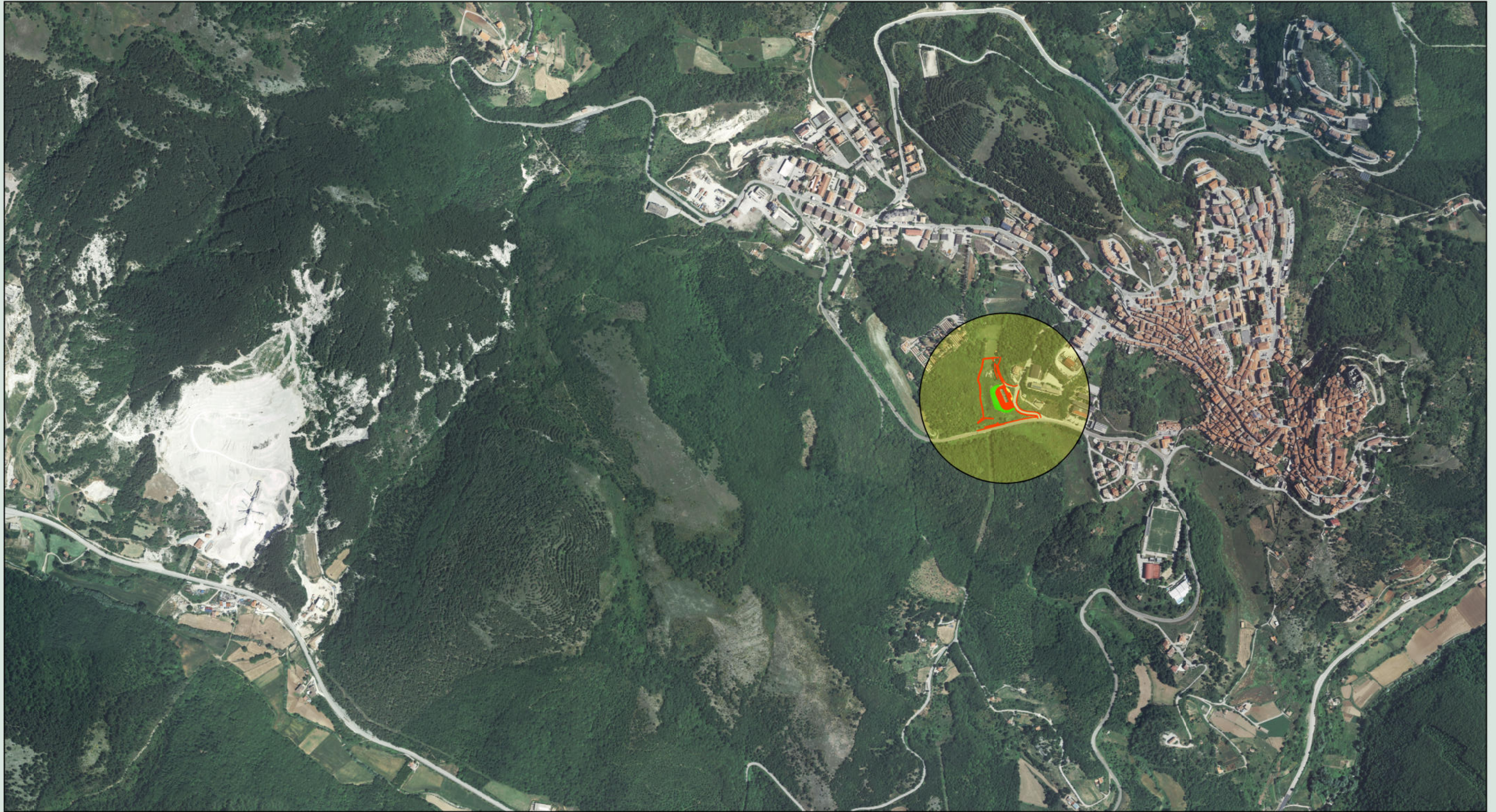
APRILE 2022



STRUTTURE: Ing. Michele ALBANO

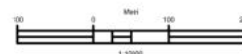
GEOLOGIA: Geol. Rocco SPAGNUOLO

File:



# ORTOFOTOCARTA

aprile 2022

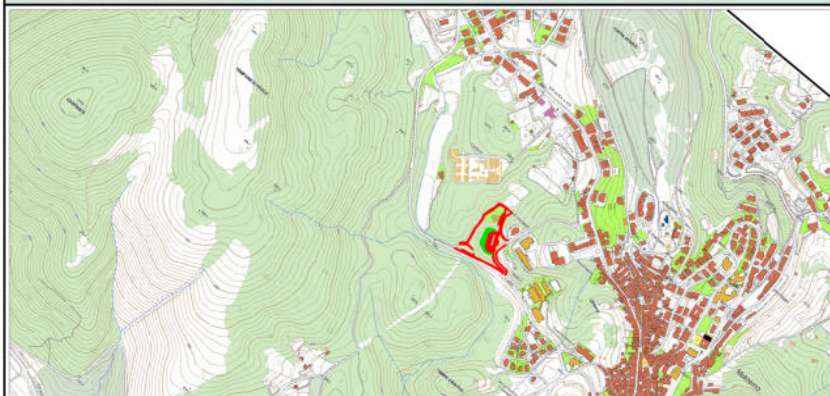
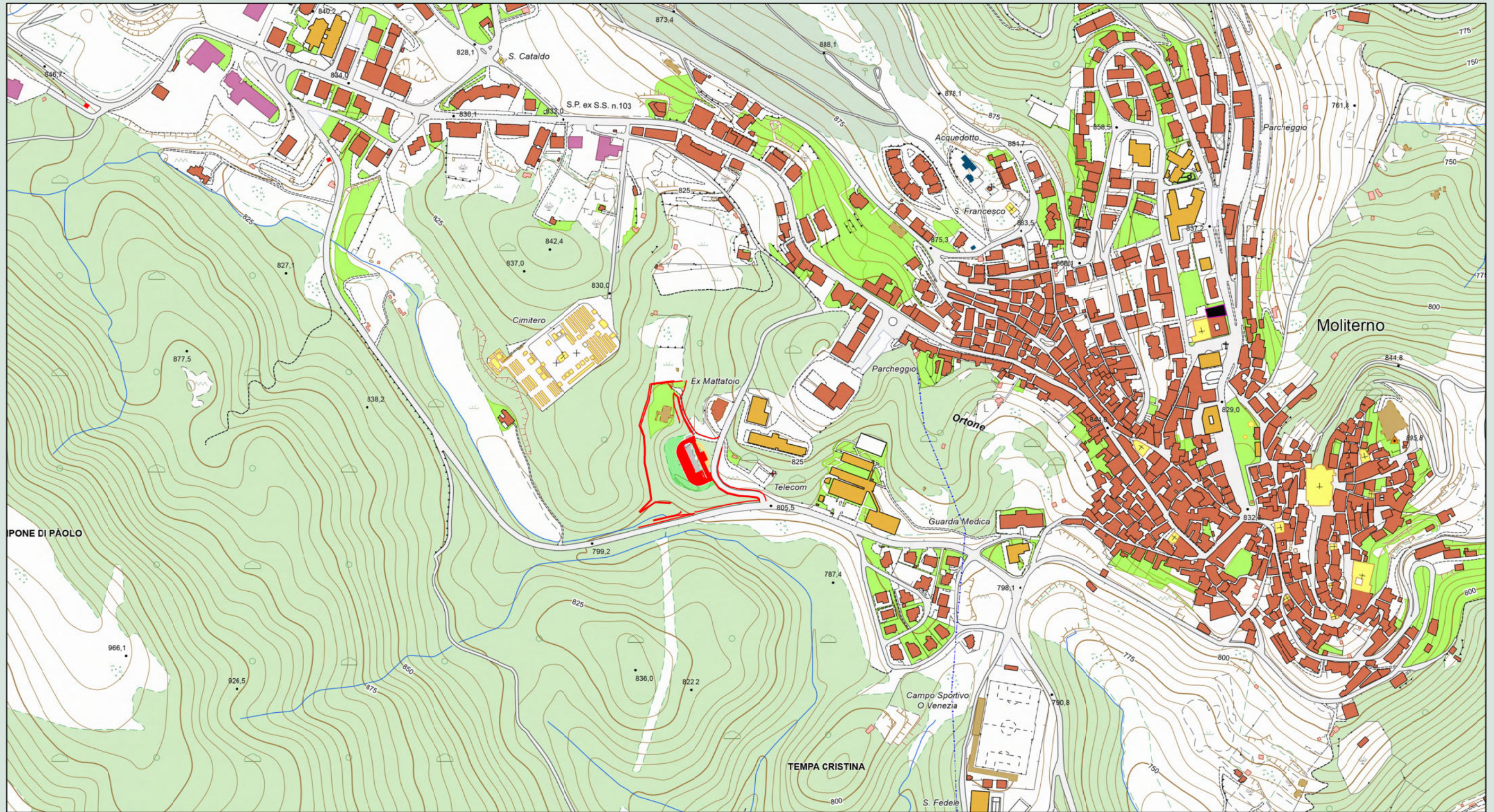


## REVISIONE

NO.	BY	DATE	DESCRIPTION

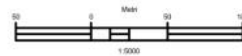
Contact:	geom. Vincenzo DOTI
Phone:	+39 335 7711659
Email:	info@cooparea.it

Codice elaborato  
**02.00.01**



### CTR REGIONE BASILICATA

aprile 2022



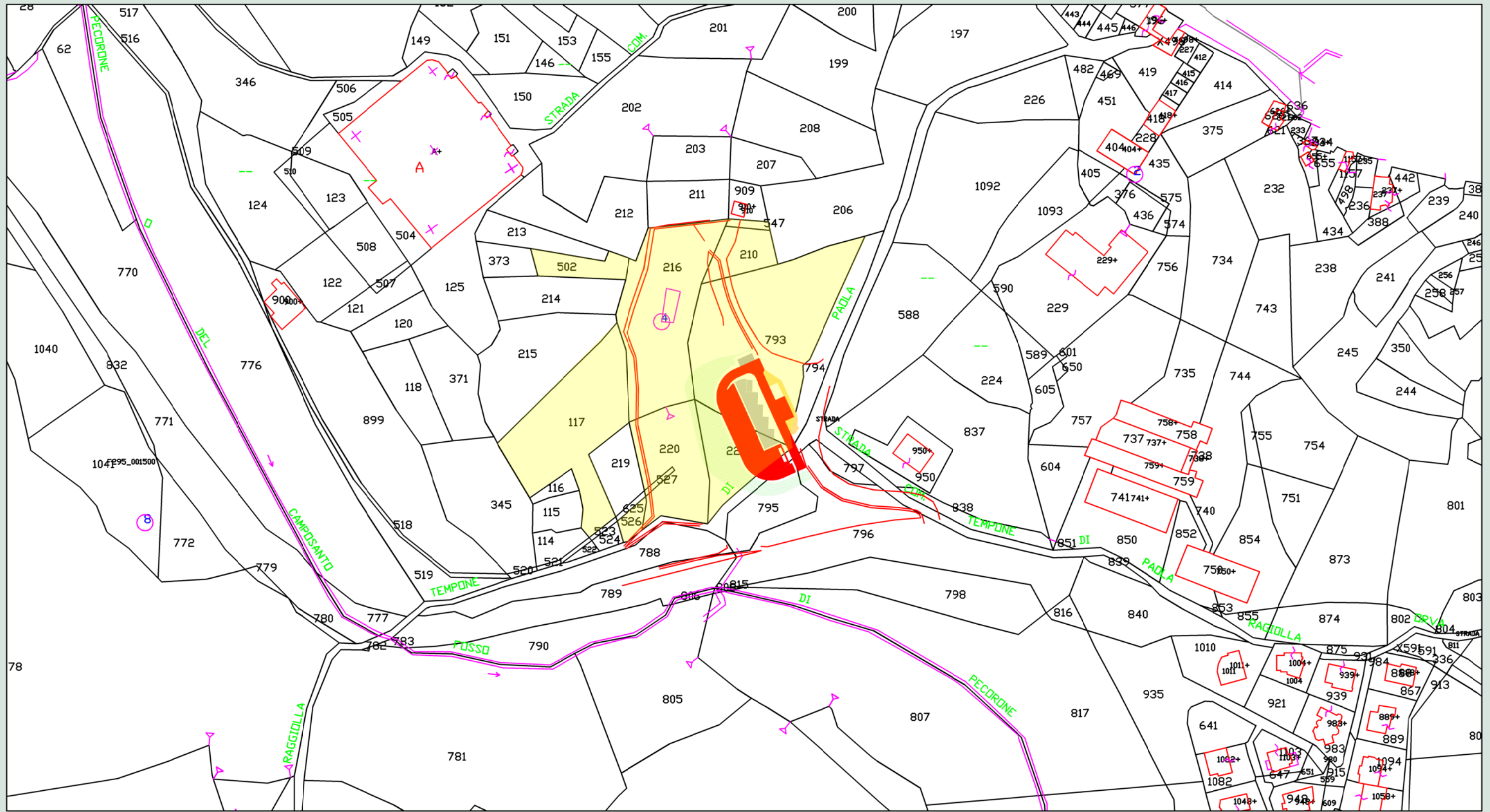
### REVISIONE

NO.	BY	DATE	DESCRIPTION

Contact:	geom. Vincenzo DOTI
Phone:	+39 335 7711659
Email:	info@cooparea.it

Codice elaborato

**02.00.02**



Com. MOLITERNO fg. 15

aprile 2022

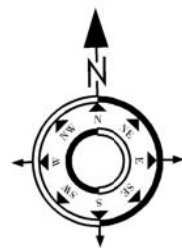
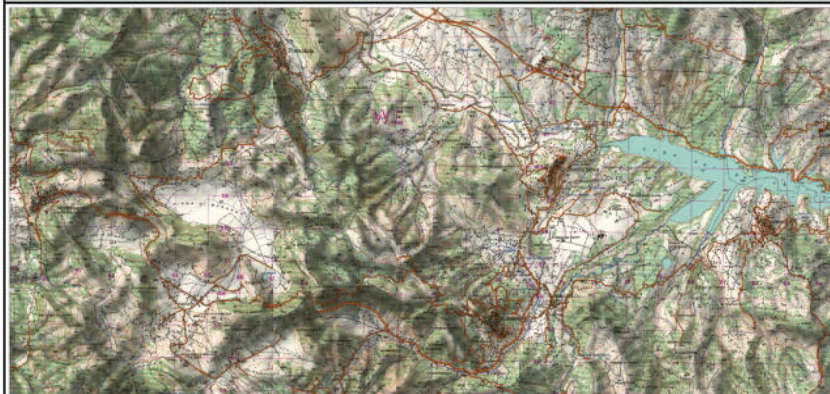
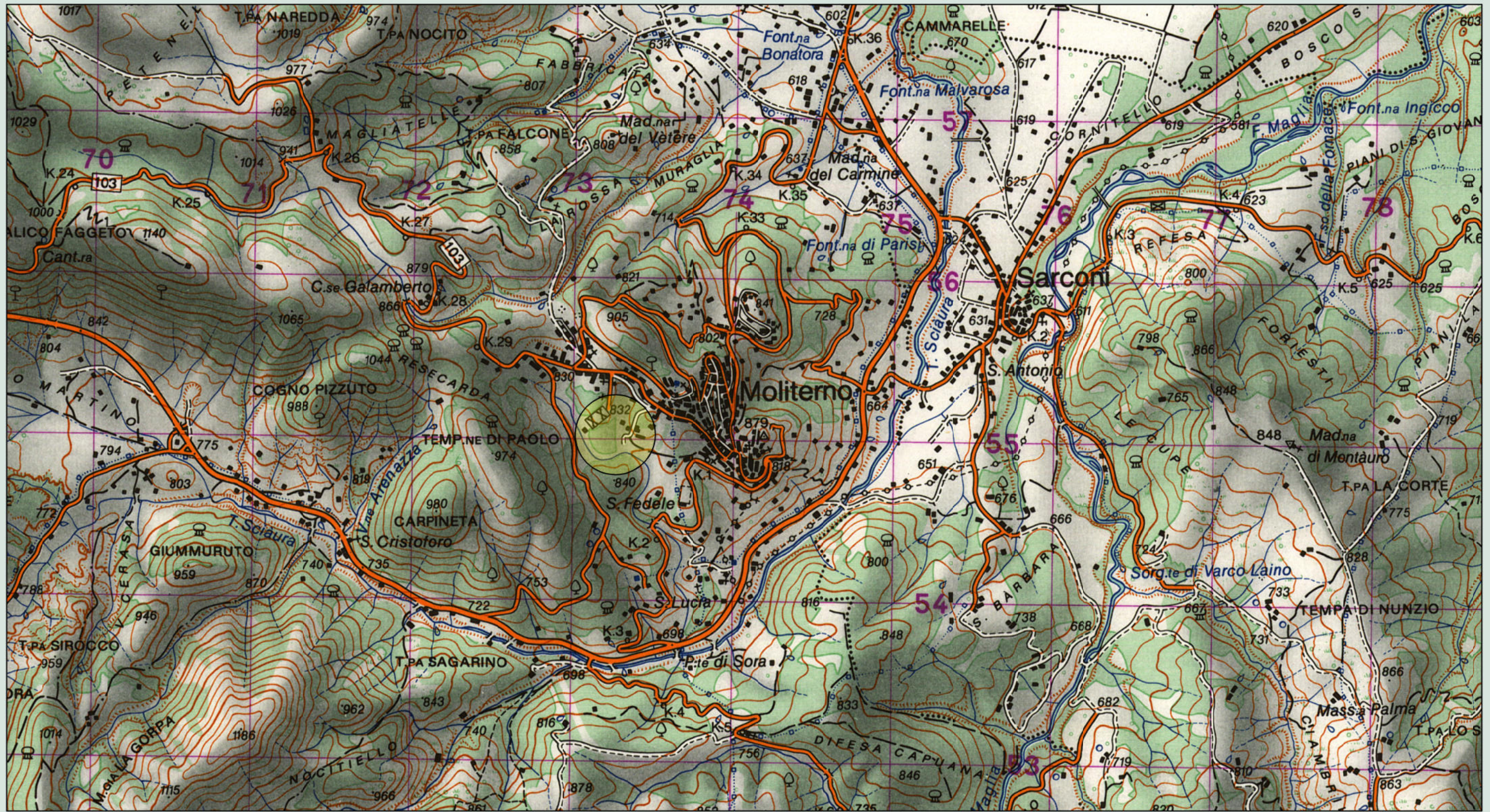


REVISIONE

NO.	BY	DATE	DESCRIPTION

Contact: geom. Vincenzo DOTI  
 Phone: +39 335 7711659  
 Email: info@cooparea.it

Codice elaborato  
**02.00.03**



IGMI Carta 50000

aprile 2022

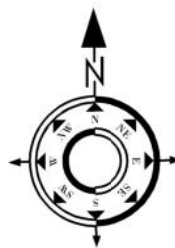
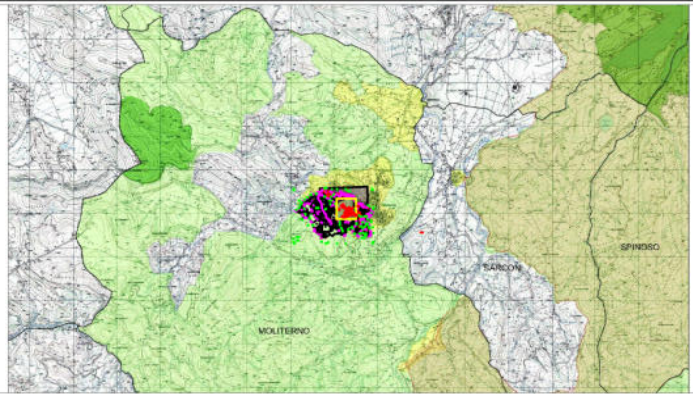
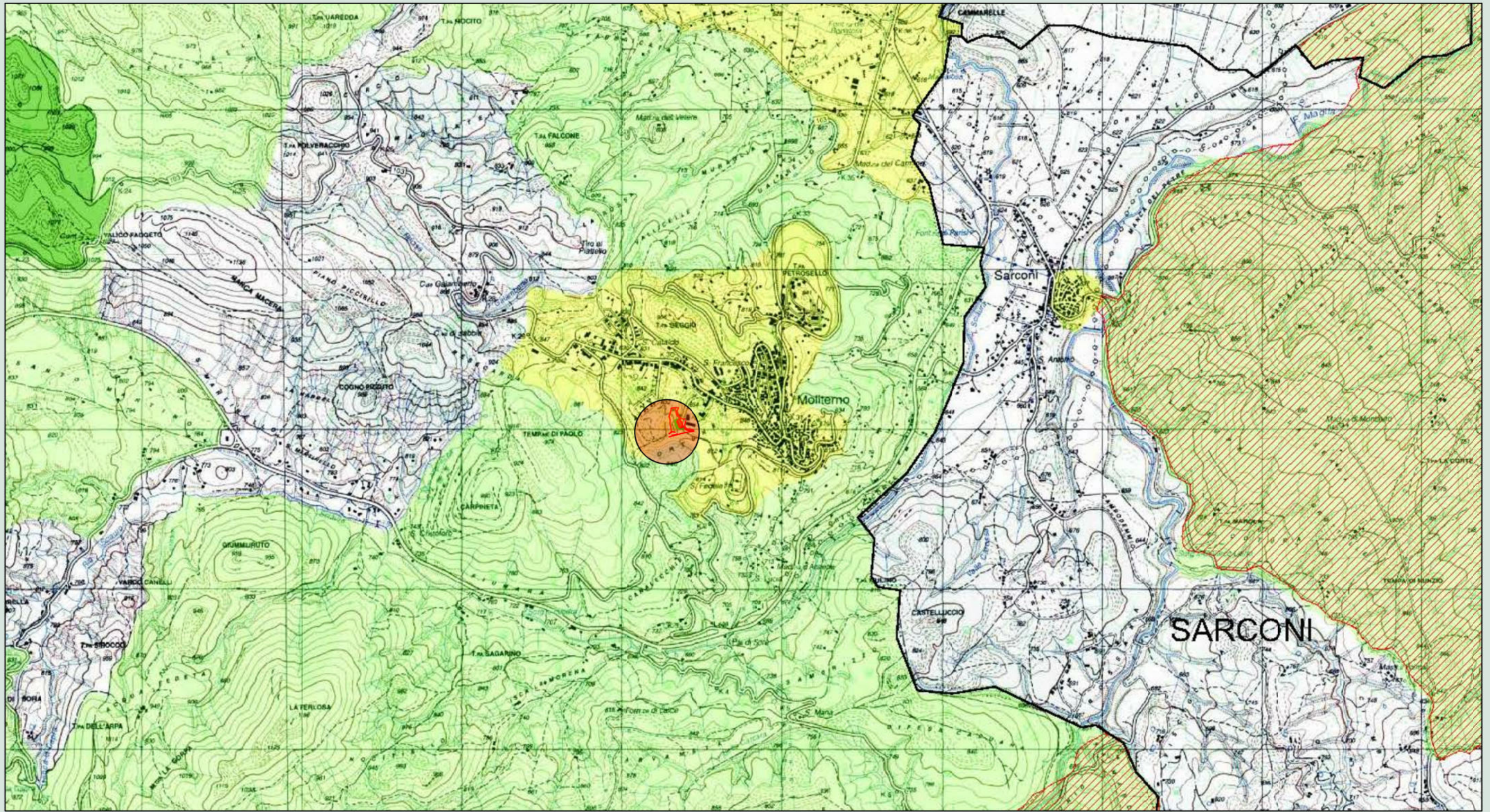


REVISIONE

NO.	BY	DATE	DESCRIPTION

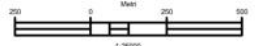
Contact: geom. Vincenzo DOTI  
 Phone: +39 335 7711659  
 Email: info@cooparea.it

Codice elaborato  
**02.00.04**



**PARCO APPENNINO LUC.**

aprile 2022

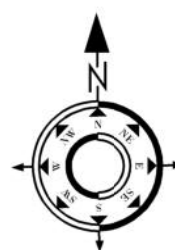
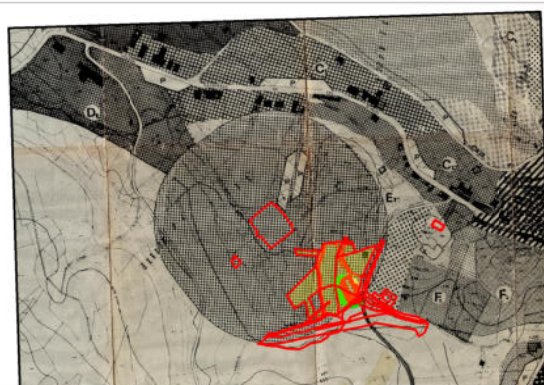


**REVISIONE**

NO.	BY	DATE	DESCRIPTION

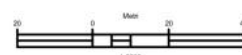
Contact: geom. Vincenzo DOTI  
 Phone: +39 335 7711659  
 Email: info@cooparea.it

Codice elaborato  
**02.00.05**



# PRG MOLITERNO

aprile 2022



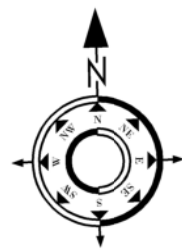
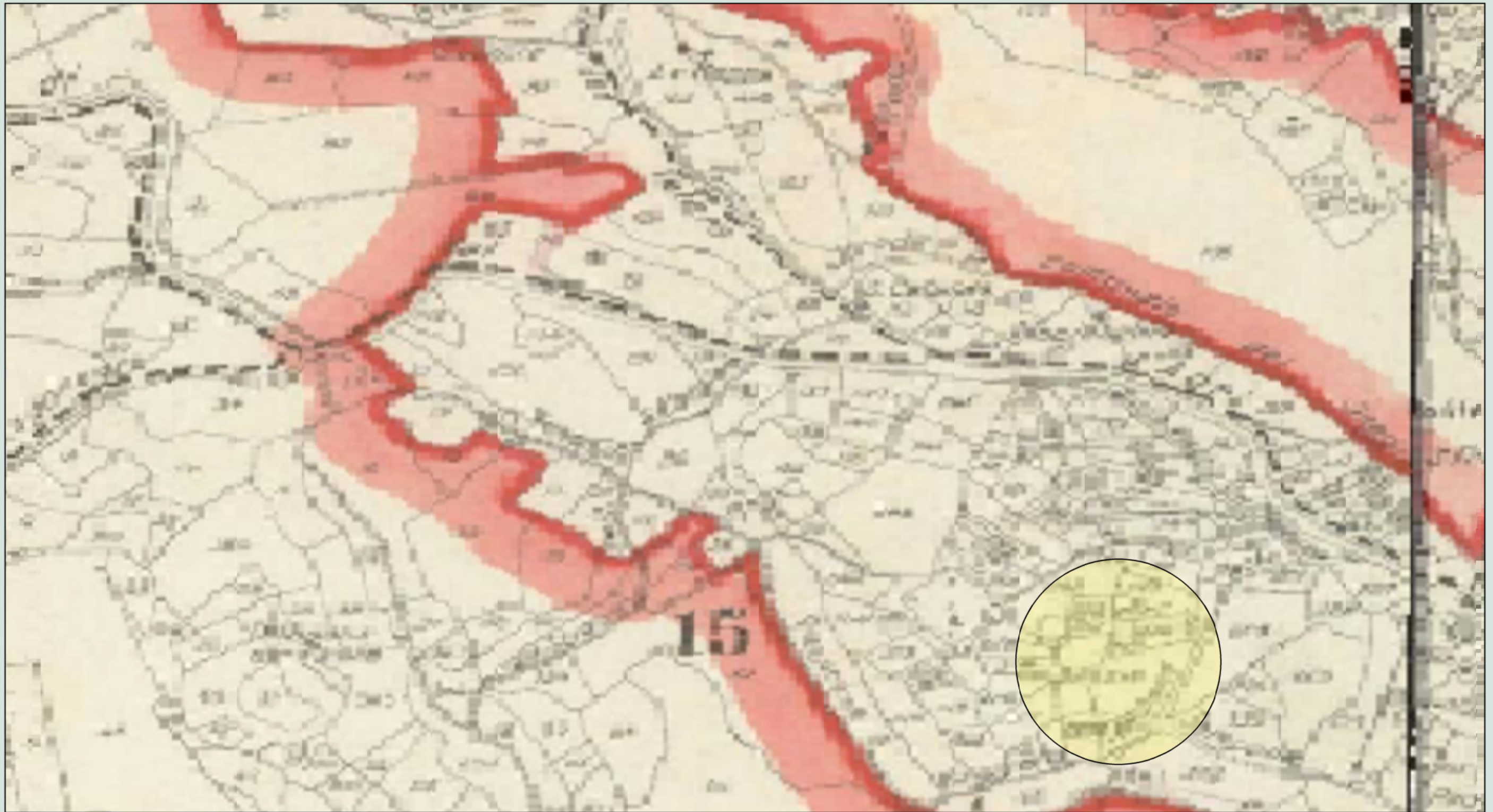
## REVISIONE

NO.	BY	DATE	DESCRIPTION

Contact: geom. Vincenzo DOTI  
 Phone: +39 335 7711659  
 Email: info@cooparea.it

Codice elaborato

**02.00.06**



## PRG MOLITERNO

aprile 2022



### REVISIONE

NO.	BY	DATE	DESCRIPTION

Contact: geom. Vincenzo DOTI  
 Phone: +39 335 7711659  
 Email: info@cooparea.it

Codice elaborato

**02.05.07**