

COMMITTENTE:



COMUNE DI MOLITERNO

Provincia di POTENZA

REGIONE BASILICATA

"REALIZZARE I MIGLIORI SISTEMI DI RACCOLTA DIFFERENZIATA
ED UN'ADEGUATA RETE DI CENTRI DI RACCOLTA "
FONDI FEARS 2014-2020 ASSE 5 - AZIONE 6A.6.1.2
REGIONE BASILICATA DIP.TO AMBIENTE ED ENERGIA

REALIZZAZIONE DEL CENTRO DI RACCOLTA COMUNALE MOLITERNO VIA ISTRIA - CENTRO URBANO

PROGETTO ESECUTIVO

03.05.00_TETTOIA METALLICA

SCALA :

1:50

PROGETTISTA: Geom. Vincenzo DOTI

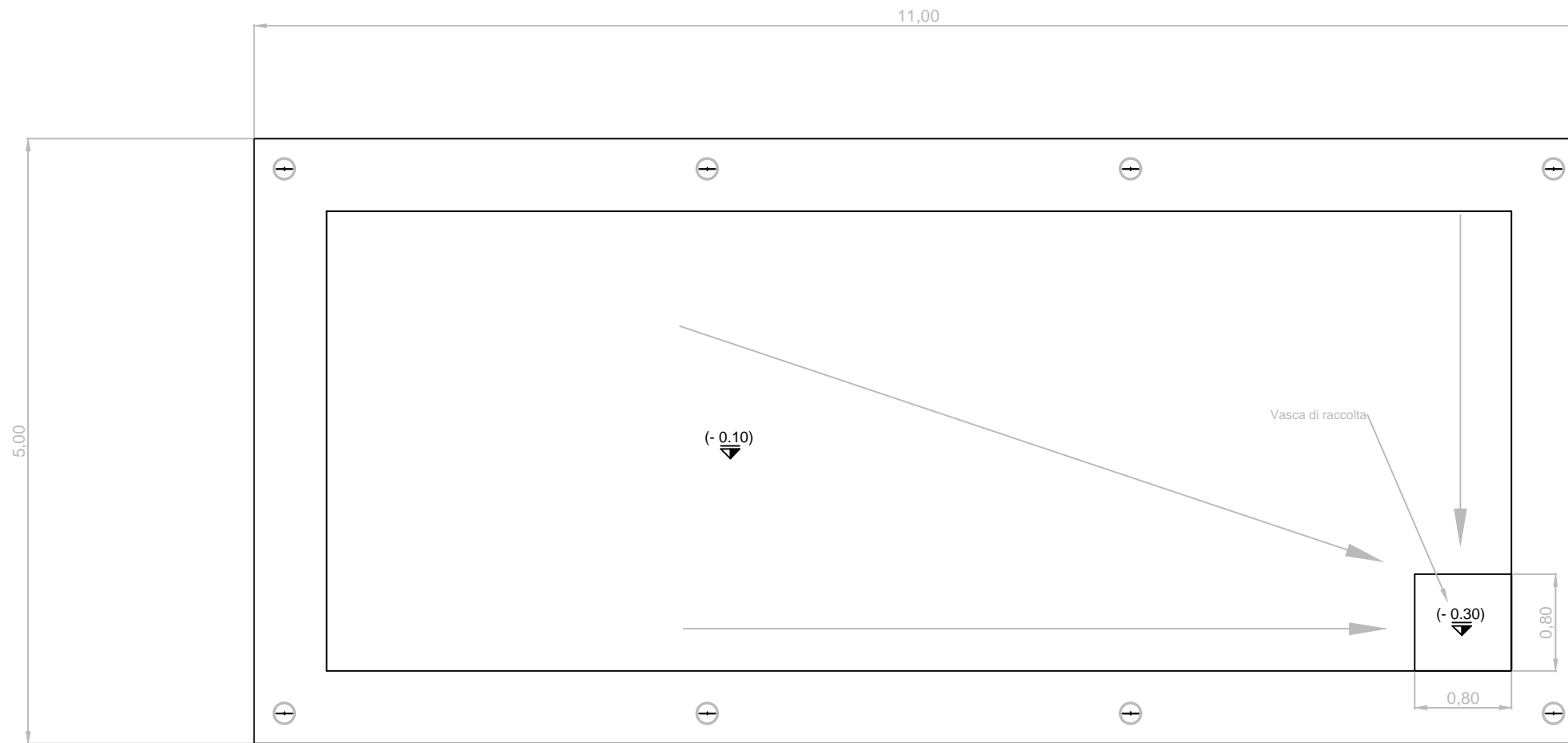


APRILE 2022

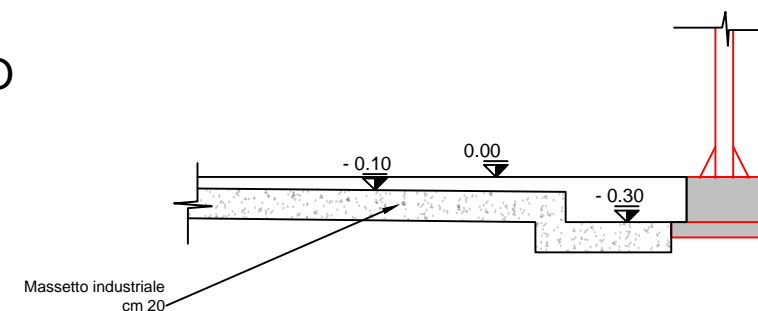
STRUTTURE: Ing. Michele ALBANO

GEOLOGIA: Geol. Rocco SPAGNUOLO

File:PROGETTO ESECUTIVO ISOLA CURCIO_rev00.DWG

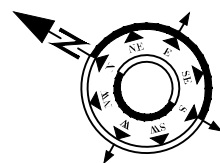
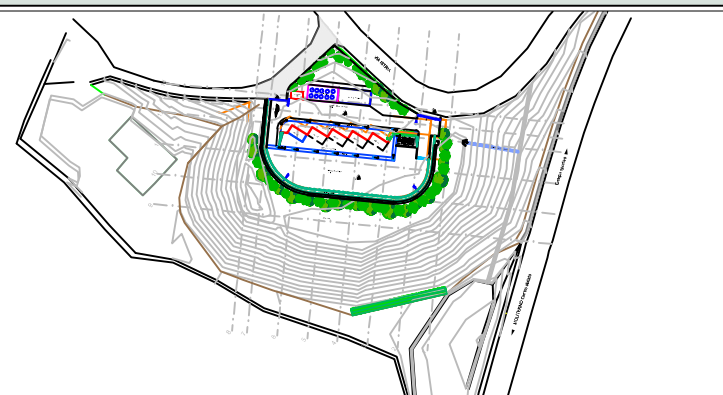


PIANTA PAVIMENTO



SEZIONE PAVIMENTO

N.B. Per costruttivo vedi tav. S02 - Carpenteria tectoria



TETTOIA PIANTA

aprile 2022

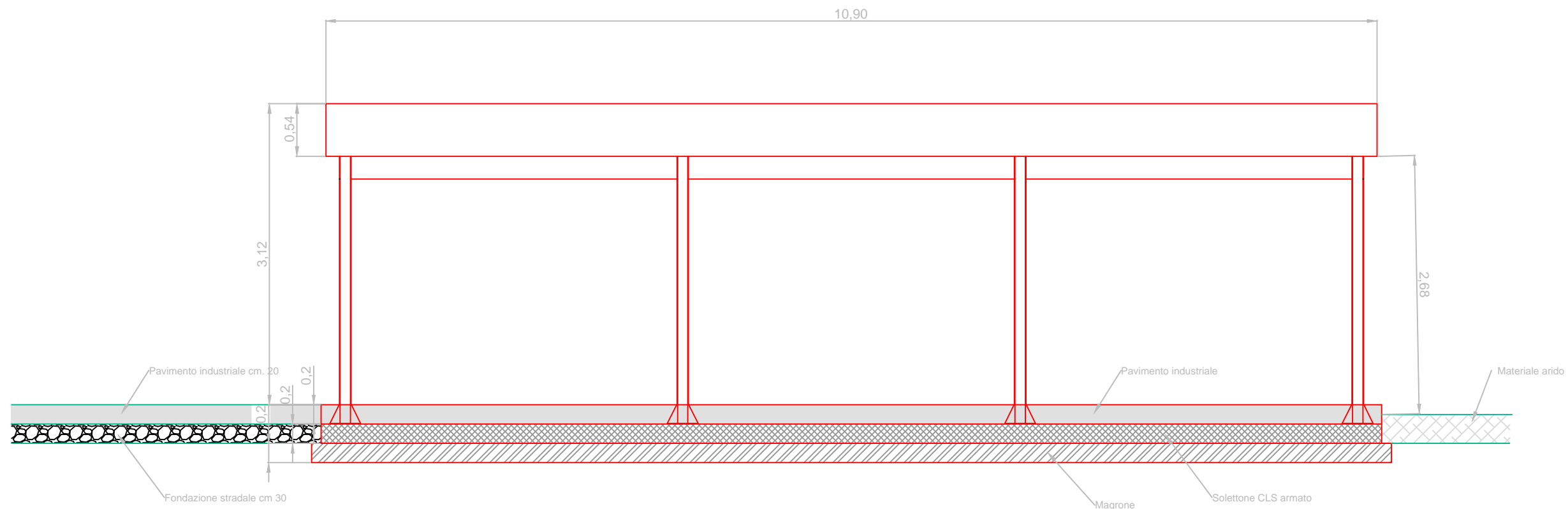


REVISIONE

NO.	BY	DATE	DESCRIPTION

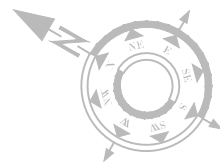
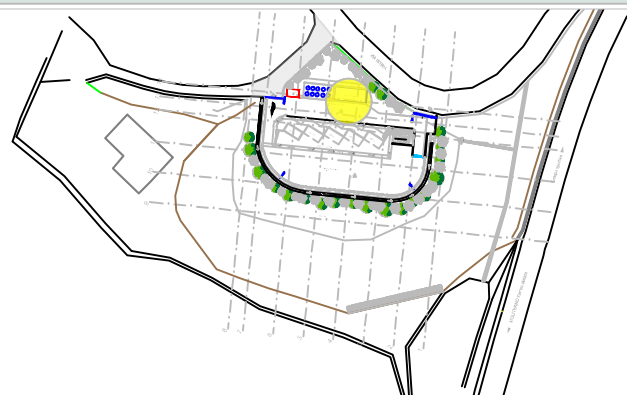
Contact: geom. Vincenzo DOTI
 Phone: +39 335 7711659
 Email: info@cooparea.it

Codice elaborato
03.05.01



SCHEMA PROSPETTO

N.B. Per costruttivo vedi tav. S02 - Carpenteria tettoria



TETTOIA PROSPETTO

aprile 2022

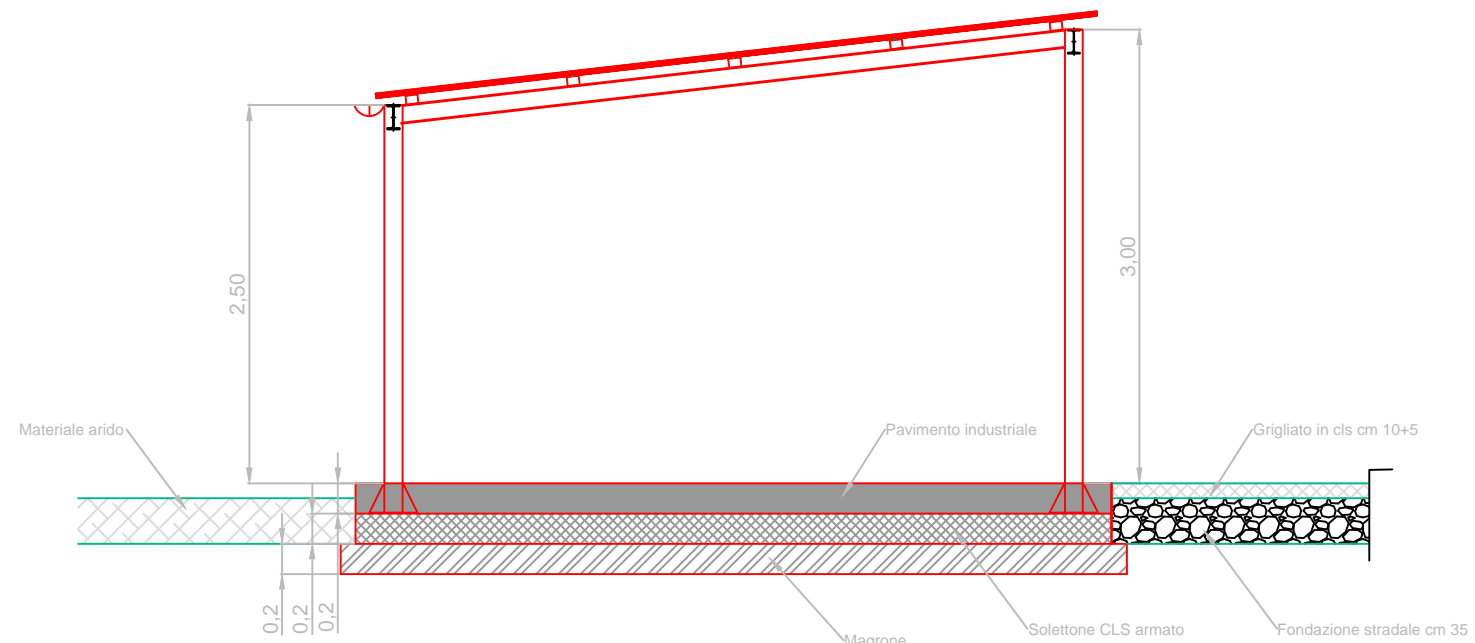


REVISIONE

NO.	BY	DATE	DESCRIPTION

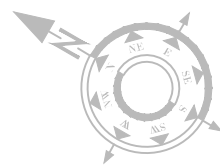
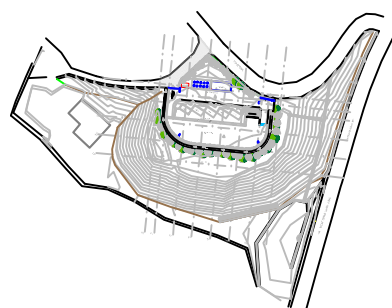
Contact: geom. Vincenzo DOTI
 Phone: +39 335 7711659
 Email: info@cooparea.it

Codice elaborato
03.05.02



SCHEMA SEZIONE

N.B. Per costruttivo vedi tav. S02 - Carpenteria tettoia



TETTOIA SEZ. A

aprile 2022



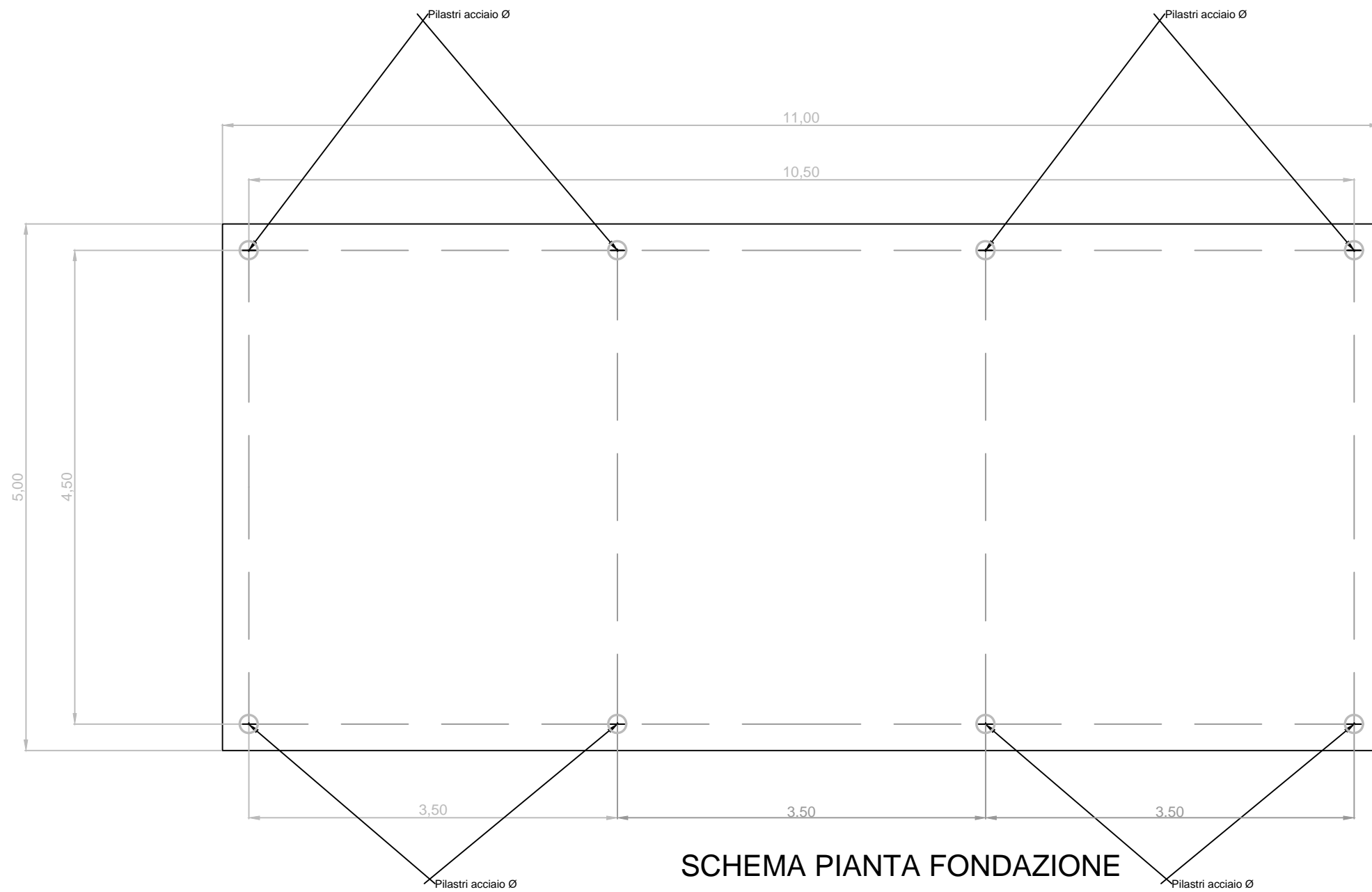
REVISIONE

NO.	BY	DATE	DESCRIPTION

Contact: geom. Vincenzo DOTI
 Phone: +39 335 7711659
 Email: info@cooparea.it

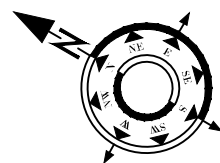
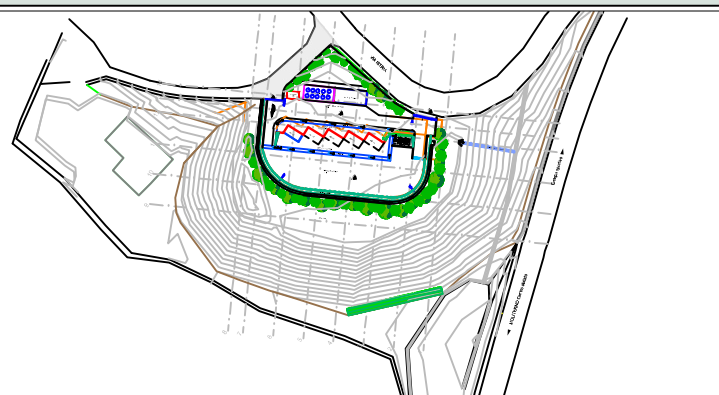
Codice elaborato

03.05.03



SCHEMA PIANTA FONDAZIONE

N.B. Per costruttivo vedi tav. S02 - Carpenteria tetteria



TETTOIA fondazione

aprile 2022

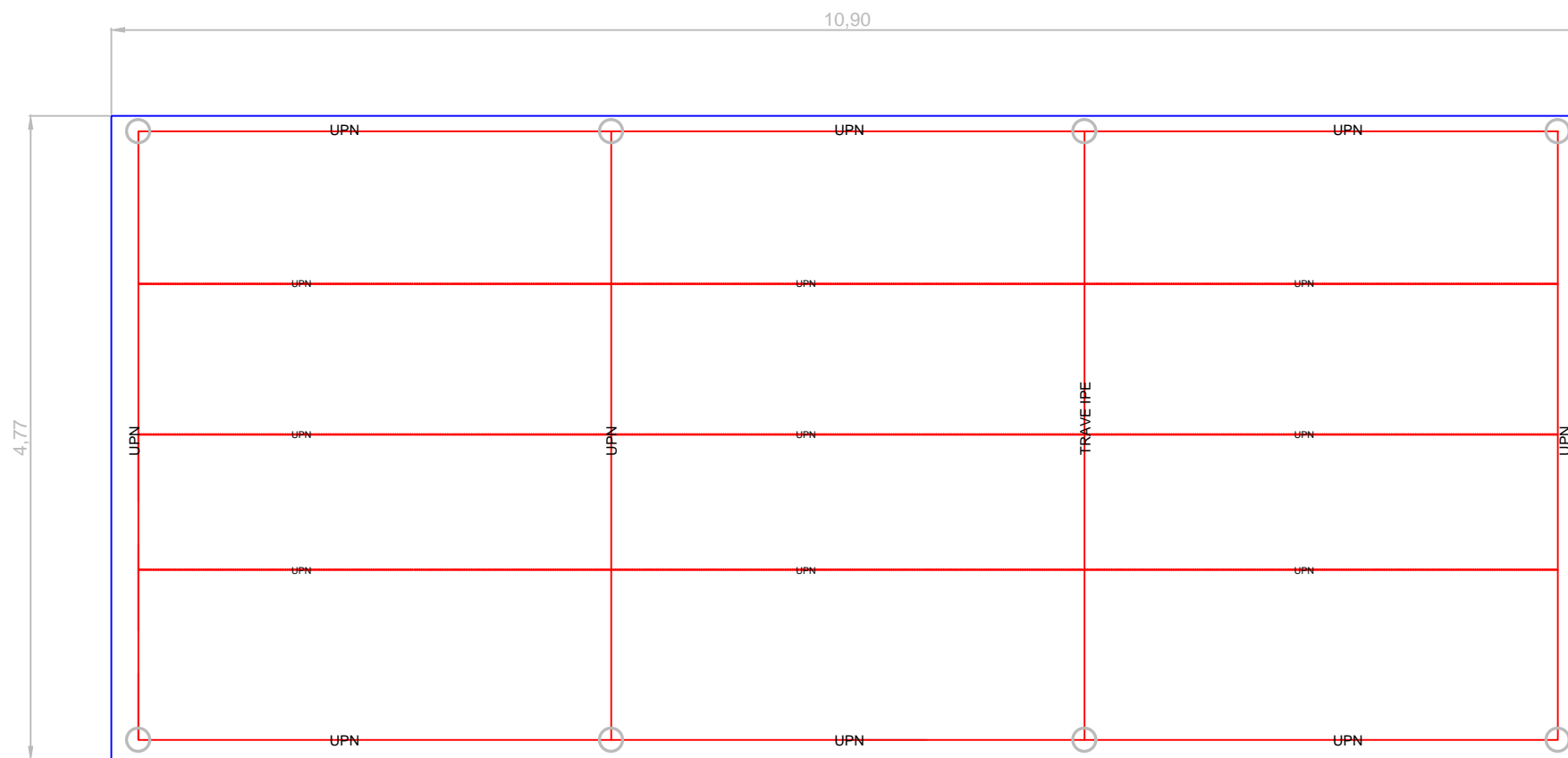


REVISIONE

NO.	BY	DATE	DESCRIPTION

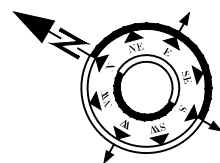
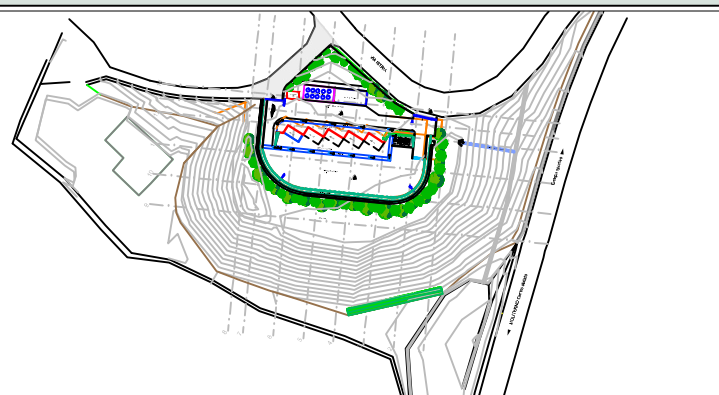
Contact: geom. Vincenzo DOTI
 Phone: +39 335 7711659
 Email: info@cooparea.it

Codice elaborato
03.05.04



SCHEMA PIANTA COPERTURA

N.B. Per costruttivo vedi tav. S02 - Carpenteria tettoria



TETTOIA COPERTURA

aprile 2022



REVISIONE

NO.	BY	DATE	DESCRIPTION

Contact: geom. Vincenzo DOTI
 Phone: +39 335 7711659
 Email: info@cooparea.it

Codice elaborato
03.05.05